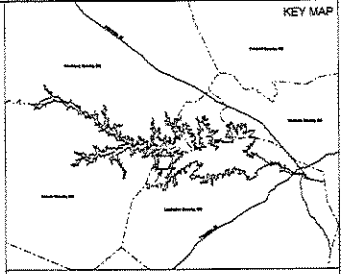
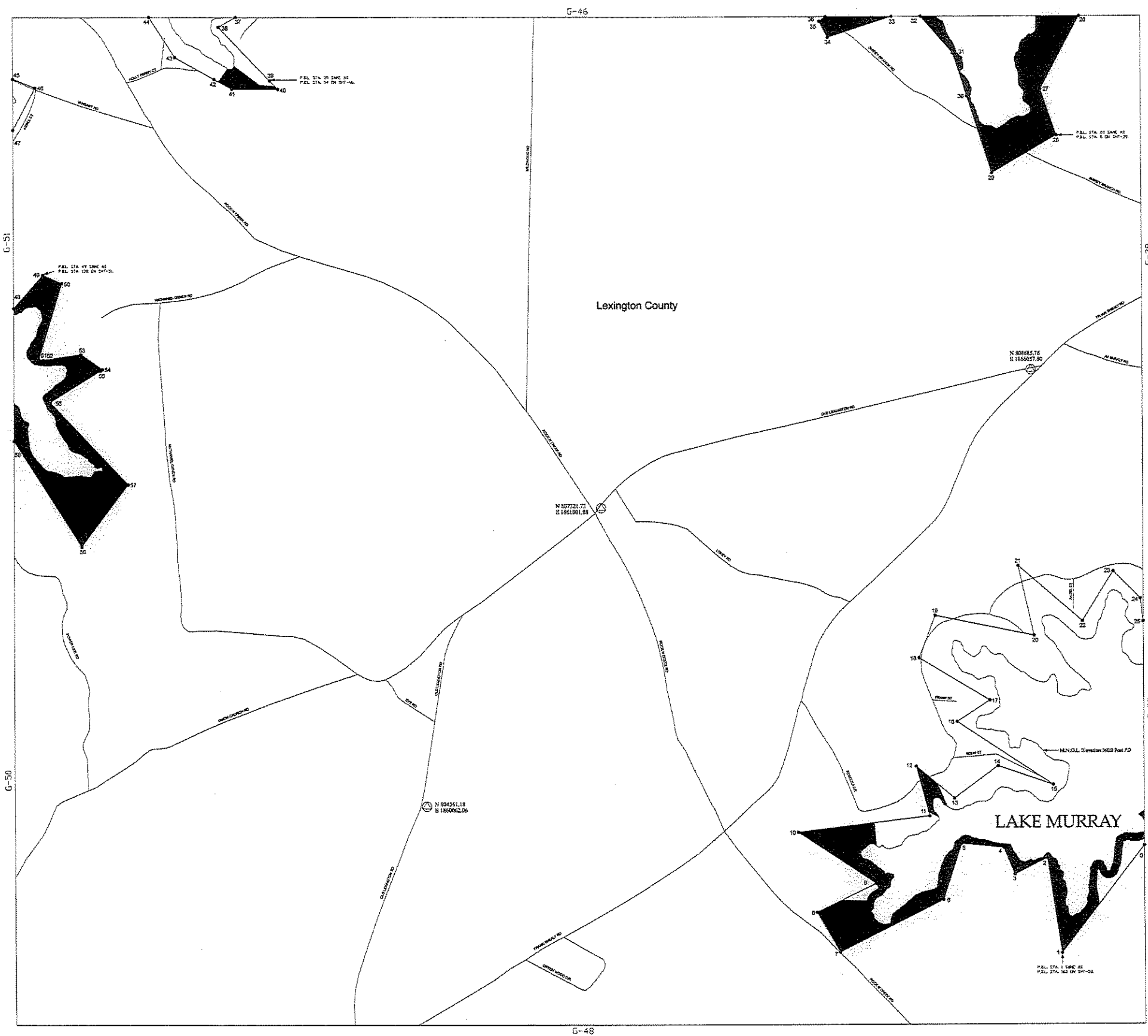


Project Boundary Line Traverse

From - To	Bearing	Distance
0-1	S 37°30' W	1351'
1-2	N 08°30' W	960'
2-3	S 63°00' W	365'
3-4	N 22°00' W	290'
4-5	N 84°30' W	420'
5-6	S 18°00' W	585'
6-7	S 63°00' W	1155'
7-8	N 29°30' W	460'
8-9	N 64°00' E	650'
9-10	N 56°15' W	920'
10-11	N 83°00' E	1310'
11-12	N 14°45' W	510'
12-13	S 50°00' E	495'
13-14	N 53°30' E	540'
14-15	S 71°00' E	579'
15-16	N 56°30' W	1140'
16-17	N 57°00' E	390'
17-18	N 59°00' W	820'
18-19	N 21°00' E	450'
19-20	S 78°30' E	1003'
20-21	N 12°45' W	708'
21-22	S 45°15' E	840'
22-23	N 32°00' E	580'
23-24	S 45°00' E	380'
24-25	S 07°00' E	229'
25-27	S 26°20' W	819'
27-28	S 19°00' E	480'
28-29	S 60°00' W	740'
29-30	N 18°00' W	797'
30-31	N 18°00' W	445'
31-32	N 41°24' W	485'
32-34	S 71°57' W	663'
34-35	N 27°30' W	180'
35-36	N 54°00' E	78'
37-38	S 60°30' W	198'
38-39	S 44°00' E	735'
39-40	S 44°00' E	114'
40-41	S 89°55' W	458'
41-42	N 61°15' W	200'
42-43	N 61°15' W	458'
43-44	N 33°00' W	472'
44-46	S 68°25' E	237'
46-47	S 27°50' W	472'
48-49	N 41°30' E	439'
49-50	S 66°25' E	206'
50-51	S 17°00' W	787'
51-52	S 79°15' E	42'
52-53	N 81°30' E	382'
53-54	S 55°00' E	263'
54-55	S 58°10' W	25'
55-56	S 58°10' W	592'
56-57	S 43°35' E	1130'
57-58	S 37°15' W	770'
58-59	N 32°45' W	1242'



LEGEND

- Railroad
- Pipeline
- Transmission line
- Road
- Project Boundary Line
- Maximum Normal Operating Level (M.N.O.L.)
- Stream
- County Boundary
- Property owned in Fee by S.C.E. & G.
- ▨ Recreation areas owned in Fee by S.C.E. & G.

HORIZONTAL DATUM BASED ON THE SOUTH CAROLINA STATE PLANE COORDINATE SYSTEM 1983/2011 (INTERNATIONAL FOOT).

VERTICAL DATUM BASED ON NAVD83 (FEET).

TO CONVERT FROM S.C.E. & G. PLANT DATUM (PD) TO NAVD83, THE PROJECT BOUNDARY COORDINATES IS DERIVED BASED ON S.C.E. & G. SURVEYS AND RECORDS SURVEYS AND DEEDS OF RECORD UNLESS OTHERWISE NOTED. ALL ANGLES OF THE PROJECT BOUNDARY TRAIL ARE ELEVATION CORRECTED WERE PROVIDED BY S.C.E. & G. AND MAPPED BY GRUBBS, INC.

STEREOREDUCTION PROCESS IN ACCORDANCE WITH NATIONAL MAP ACTUALLY DEMONSTRATED. METAL PHOTOGRAPHY WAS FILMED AT A SCALE APPROXIMATELY 1 INCH = 400 FEET.

J. GERRARD BEWELER, A PROFESSIONAL SOUTH CAROLINA PHOTOGRAMMETRIC SURVEYOR/MAPPER HAS REVIEWED THE LAKE MURRAY PROJECT MAPS, THE PLANIMETRIC AND COMPOUND SURVEY OF SAID TRAIL AND IS ACCORDING WITH THE NATIONAL MAP ACCURACY STANDARDS FOR THE SCALE OF 1"=400' AND WERE PRODUCED USING PHOTOGRAMMETRIC METHODS UNDER MY DIRECT SUPERVISION. ALL WORK IS BASED ON UNADJUSTED SOUTH CAROLINA STATE PLANE COORDINATE SYSTEM (INTERNATIONAL FOOT) AND THE VERTICAL DATUM IS NAVD83 (FEET).

THIS DOCUMENT WAS ORIGINALLY ISSUED AND SEALED BY GERRARD BEWELER, 1-24835, ON JULY 2, 2008. THIS MEDIA SHALL NOT BE CONSIDERED A CERTIFIED DOCUMENT.

I, GARY BROWN, A PROFESSIONAL LAND SURVEYOR IN THE STATE OF SOUTH CAROLINA P.L.S. 13343, HAVE REVIEWED THIS PORTION OF THE LAKE MURRAY PROJECT BOUNDARY SHOW HEREIN. THE LOCATIONS SHOWN ON THIS MAP ARE POSSIBLE PLANNING INDICATORS OVER THE LANDS SHOWN ON THIS MAP THAT ARE INSIDE THE PROJECT BOUNDARY. THE PROJECT BOUNDARY LINES THAT ARE NOT CONTOUR LINES WERE BASED ON S.C.E. & G. SURVEYS AND RECORDS SURVEYS AND DEEDS OF RECORD.



EXHIBIT G SHEET G-47

DETAIL MAP OF PROJECT AREA
SHEET 47 OF 77
SALUDA HYDROELECTRIC PROJECT NO. 516
SOUTH CAROLINA ELECTRIC & GAS COMPANY

SCALE: 1 INCH = 400 FEET

0 400 800 1,600
FEET

DATE: AUGUST 2008

G-46

G-51

G-50

G-39

G-38

G-48