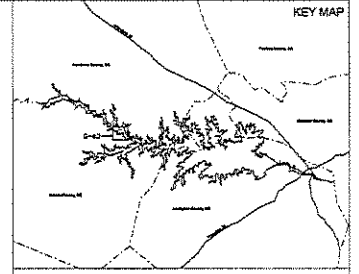
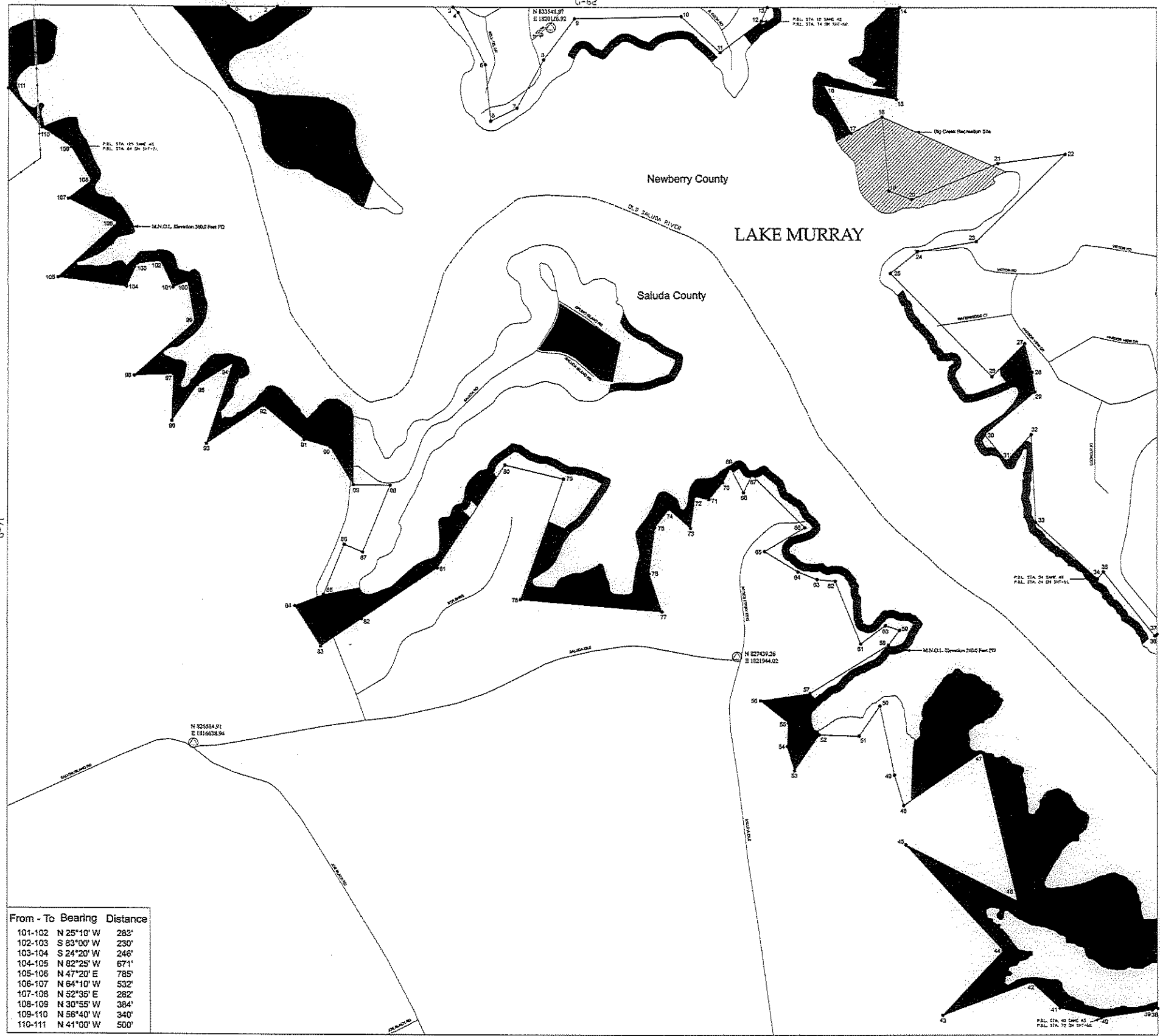


**Project Boundary Line Traverse**

From - To	Bearing	Distance
0-1	S 53°29' E	273'
1-2	N 58°00' E	307'
3-4	S 45°05' E	74'
4-5	S 27°45' E	570'
5-6	S 05°30' E	550'
6-7	N 63°45' E	288'
7-8	N 29°00' E	537'
8-9	N 37°15' E	500'
9-10	N 88°45' E	1045'
10-11	S 47°30' E	520'
11-12	N 53°00' E	505'
12-13	N 23°30' E	147'
14-15	S 02°00' W	888'
15-16	N 79°00' W	723'
16-17	S 30°00' E	540'
17-18	N 61°54' E	338'
18-19	S 05°30' E	718'
19-20	S 69°15' E	235'
20-21	N 07°30' E	910'
21-22	N 82°15' E	663'
22-23	S 45°45' W	1211'
23-24	S 80°00' W	585'
24-25	S 51°30' W	335'
25-26	S 44°30' E	1412'
26-27	N 44°30' E	452'
27-28	S 14°15' E	290'
28-29	S 08°15' E	192'
29-30	S 49°30' W	642'
30-31	S 39°30' E	332'
31-32	N 43°15' E	352'
32-33	S 03°00' E	855'
33-34	S 48°00' E	817'
34-35	N 39°30' E	90'
35-36	S 38°45' E	800'
36-37	N 48°45' E	26'
38-39	S 71°42' W	55'
39-40	S 81°12' W	502'
40-41	N 76°33' W	419'
41-42	N 47°13' W	373'
42-43	S 69°24' W	924'
43-44	N 42°54' E	868'
44-45	N 42°26' W	1402'
45-46	S 63°10' E	1215'
46-47	N 13°18' W	1486'
47-48	S 55°47' W	921'
48-49	N 16°58' W	311'
49-50	N 11°45' W	690'
50-51	S 34°30' W	357'
51-52	N 88°32' W	388'
52-53	S 34°30' W	423'
53-54	N 16°45' W	245'
54-55	N 03°00' E	230'
55-56	N 51°30' W	350'
56-57	N 81°44' E	488'
57-58	N 58°15' E	895'
58-59	N 37°00' E	182'
59-60	N 71°30' W	145'
60-61	S 53°14' W	300'
61-62	N 22°01' W	658'
62-63	N 84°30' W	178'
63-64	N 68°15' W	200'
64-65	N 58°45' W	380'
65-66	N 59°30' E	455'
66-67	N 45°30' W	725'
67-68	S 26°00' W	190'
68-69	N 28°00' W	270'
69-70	S 26°30' W	160'
70-71	S 39°00' W	215'
71-72	N 77°00' W	140'
72-73	S 07°45' W	310'
73-74	N 49°15' W	285'
74-75	S 37°00' W	225'
75-76	S 07°00' W	450'
76-77	S 18°45' E	390'
77-78	N 85°15' W	1389'
78-79	N 19°40' E	1243'
79-80	N 76°40' W	590'
80-81	S 33°20' W	1195'
81-82	S 56°05' W	890'
82-83	S 56°05' W	480'
83-84	N 32°25' W	465'
84-85	N 68°20' E	300'
85-86	N 22°20' E	526'
86-87	S 87°25' E	195'
87-88	N 22°20' E	700'
88-89	N 89°25' W	360'
89-90	N 31°35' W	428'
90-91	N 73°40' W	285'
91-92	N 50°10' W	515'
92-93	S 56°05' W	667'
93-94	N 18°00' E	825'
94-95	S 58°05' W	437'
95-96	S 35°20' W	428'
96-97	N 01°55' E	455'
97-98	S 87°50' W	380'
98-99	N 48°20' E	766'
99-100	N 09°40' W	401'
100-101	S 68°20' W	155'

From - To	Bearing	Distance
101-102	N 25°10' W	283'
102-103	S 83°00' W	230'
103-104	S 24°20' W	246'
104-105	N 82°25' W	671'
105-106	N 47°20' E	785'
106-107	N 64°10' W	532'
107-108	N 52°35' E	282'
108-109	N 30°55' W	384'
109-110	N 56°40' W	340'
110-111	N 41°00' W	500'



**LEGEND**

- Railroad
- Pipeline
- Transmission line
- Road
- Project Boundary Line
- Maximum Normal Operating Level (MNOL)
- Stream
- County Boundary
- Property owned in fee by SCE & G
- ▨ Recreation areas owned in fee by SCE & G

HORIZONTAL DATUM BASED ON THE SOUTH CAROLINA STATE PLANE COORDINATE SYSTEM NAD83/2011 (INTERNATIONAL FOOT).

VERTICAL DATUM BASED ON NAVD83 (FEET).

TO CONVERT FROM S.C.S. & G. PLANT DATUM (PD) TO NAVD 83 AND "01.01", THE PROJECT BOUNDARY HEREIN IS DEFINED BASED ON S.C.E. & G. SURVEYS AND RECORDS NUMBER AND DATES OF RECORD UNLESS OTHERWISE NOTED. ALL AREAS OF THE PROJECT BOUNDARY THAT ARE ELEVATION CONTROL VEHES PROVIDED BY S.C.E. & G. AND MAPPED BY SDC, INC.

STEREOCORRELATION PROCESSED IN ACCORDANCE WITH NATIONAL MAP ACCURACY STANDARDS. AERIAL PHOTOGRAPHY WAS FLOWN AT A SCALE APPROXIMATELY 1 INCH = 600 FEET.

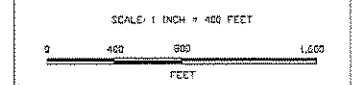
I, GERRARD BRIDGEMAN, A PROFESSIONAL SOUTH CAROLINA PHOTOGRAMMETRIC SURVEYOR/HAVESER HAVE REVIEWED THE LAKE MURRAY PROJECT BOUNDARY MAP. THE PLANIMETRIC AND CONTROL POINTS ON SAID MAPS ARE IN ACCORDANCE WITH THE NATIONAL MAP ACCURACY STANDARDS FOR THE SCALE OF 1"=400' AND WERE PROCESSED USING PHOTOGRAMMETRIC METHODS UNDER MY DIRECT SUPERVISION. ALL WORK IS BASED ON 8003/2011 SOUTH CAROLINA STATE PLANE COORDINATE SYSTEM (INTERNATIONAL FOOT) AND THE VERTICAL DATUM IS NAVD83 (FEET).

THIS DOCUMENT WAS ORIGINALLY ISSUED AND DATED BY GERRARD BRIDGEMAN, L-24655, ON JULY 2, 2011. THIS MEDIA SHALL NOT BE CONSIDERED A REPRODUCED COPY.



EXHIBIT G SHEET G-63

DETAIL MAP OF PROJECT AREA  
SHEET 63 OF 77  
SALUDA HYDROELECTRIC PROJECT NO. 516  
SOUTH CAROLINA ELECTRIC & GAS COMPANY



DATE: AUGUST 2008