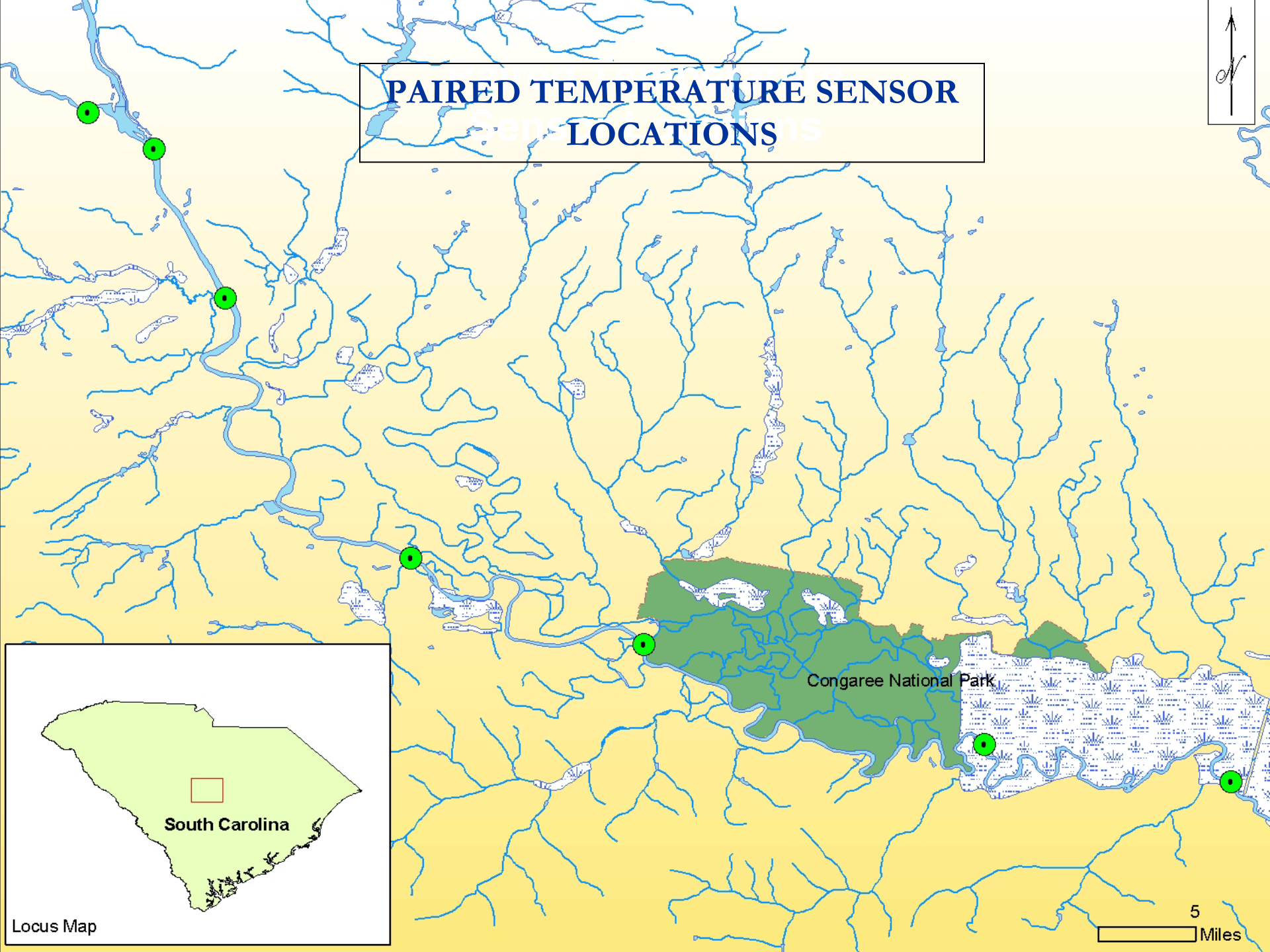
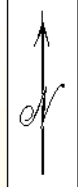


# Lower Saluda and Congaree Rivers Temperature Study: Update

Water Quality Technical Working  
Committee Meeting

August 23, 2006

# PAIRED TEMPERATURE SENSOR LOCATIONS



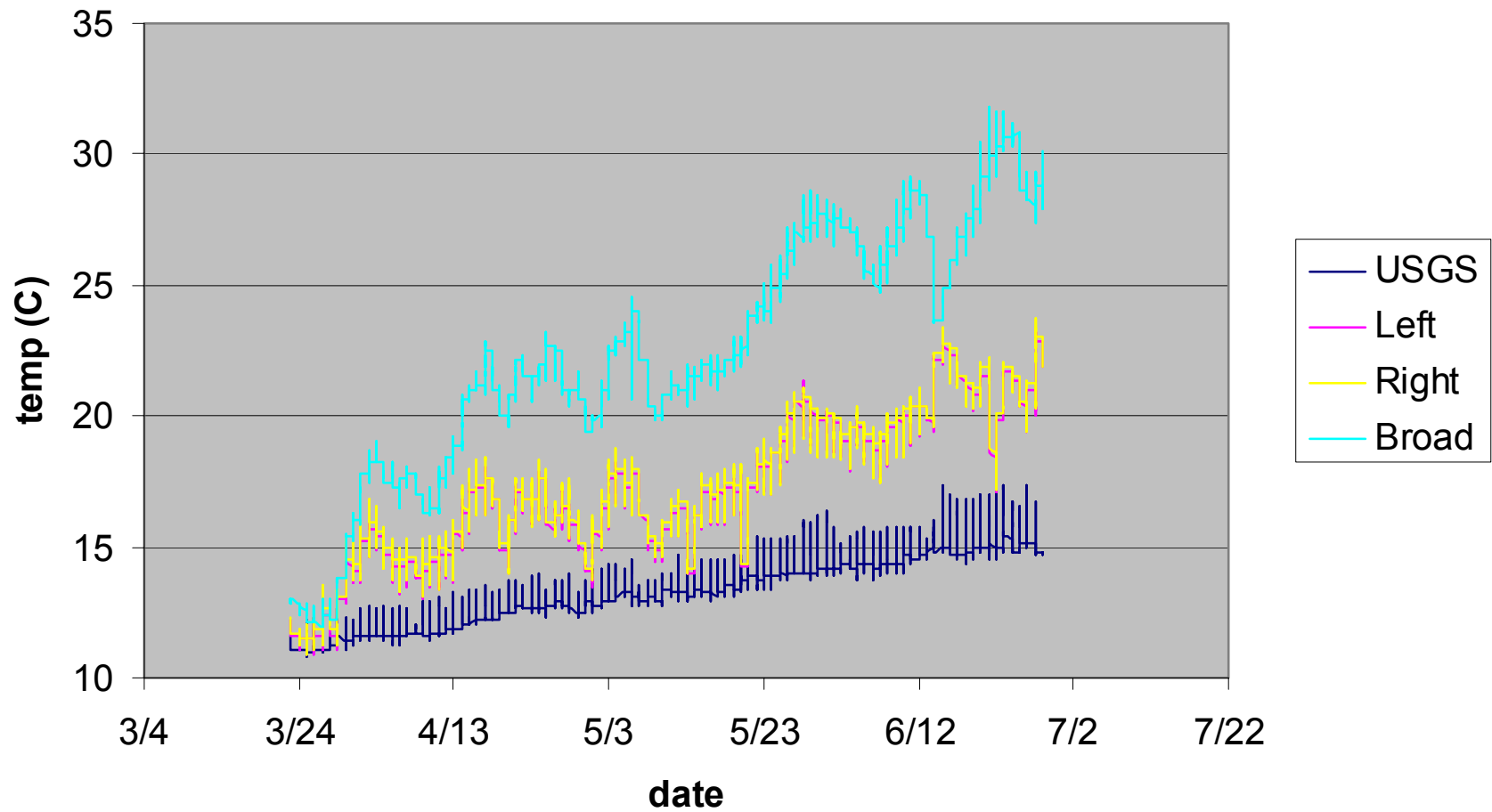
Congaree National Park

South Carolina

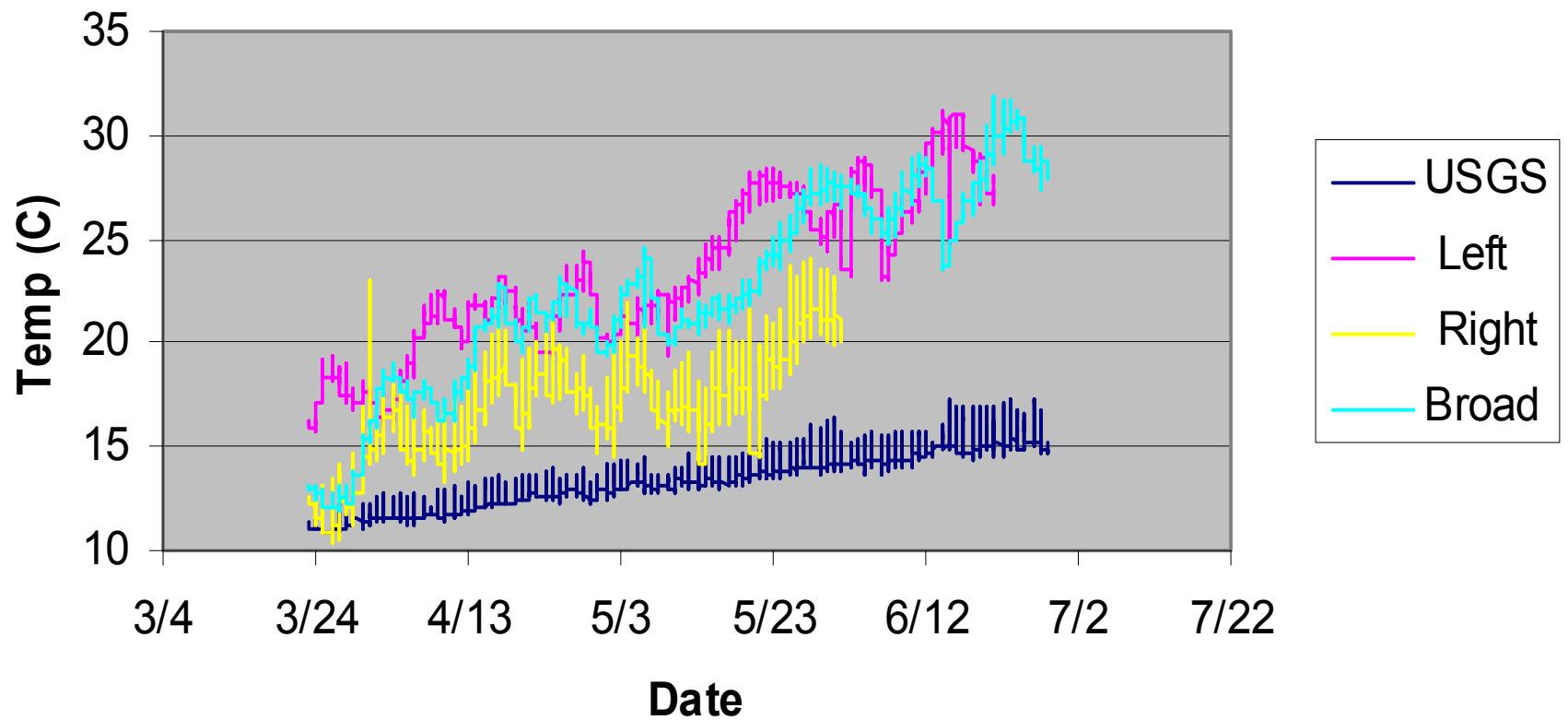
Locus Map

5 Miles

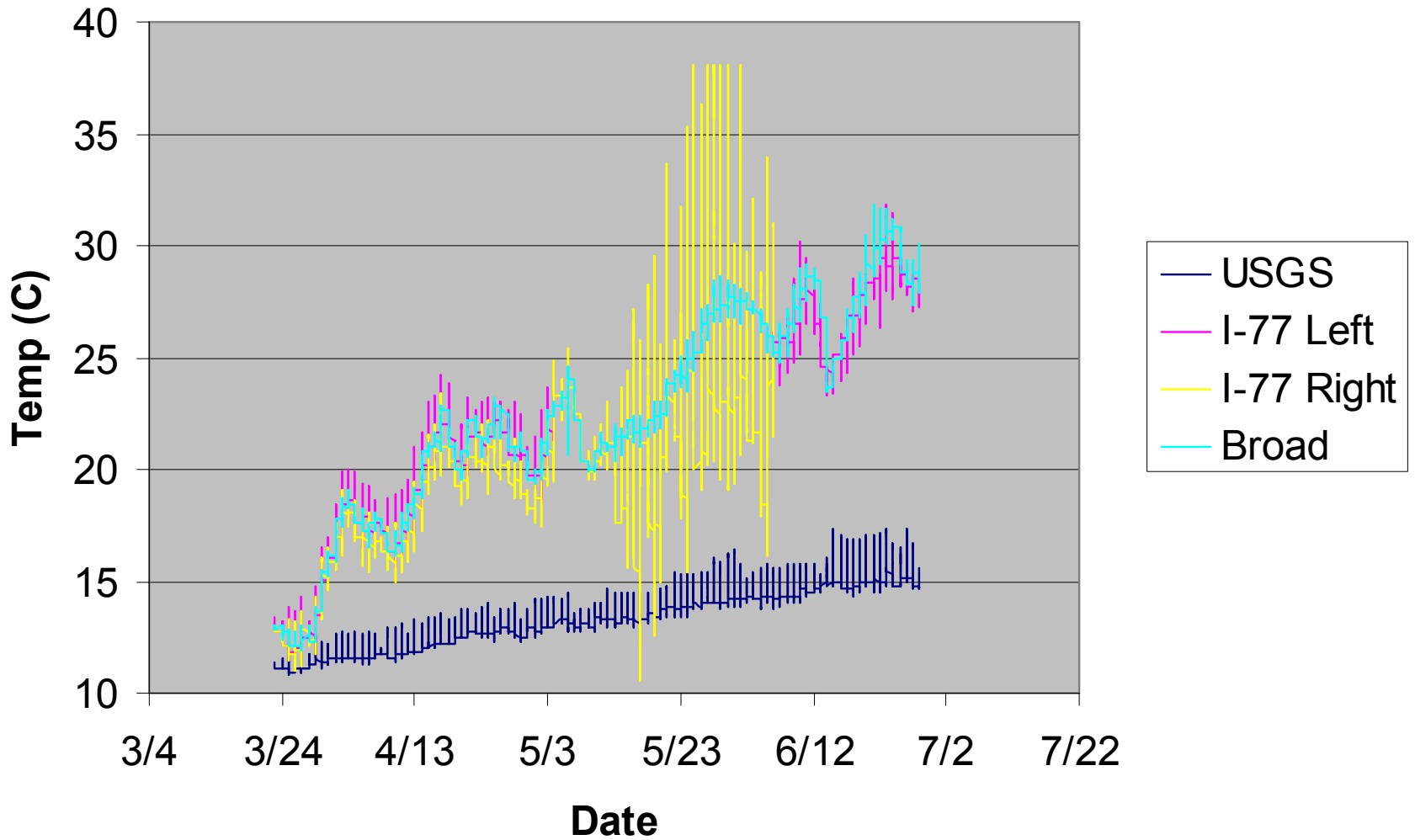
## Lower Saluda Downstream of Zoo



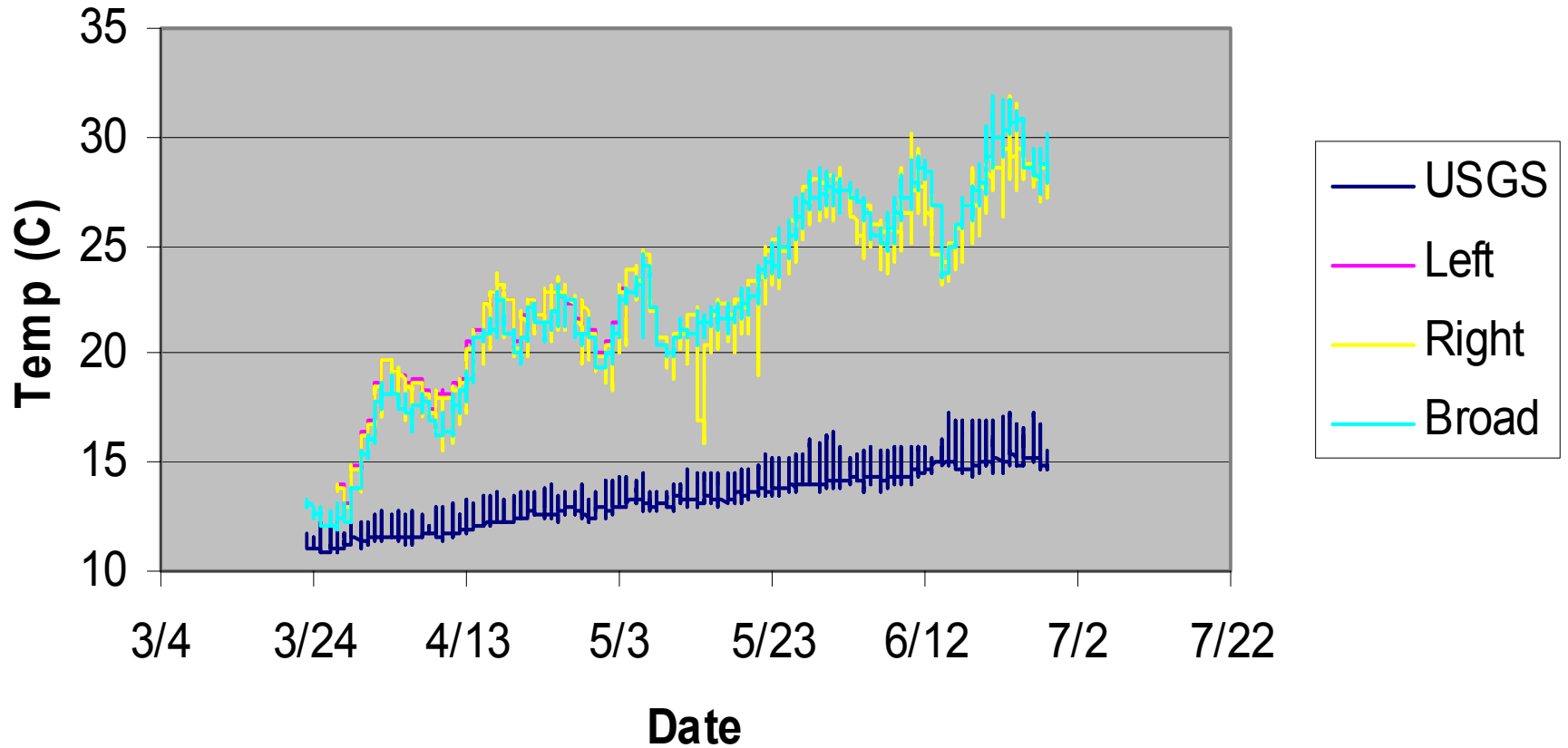
## Congaree at Gervais St



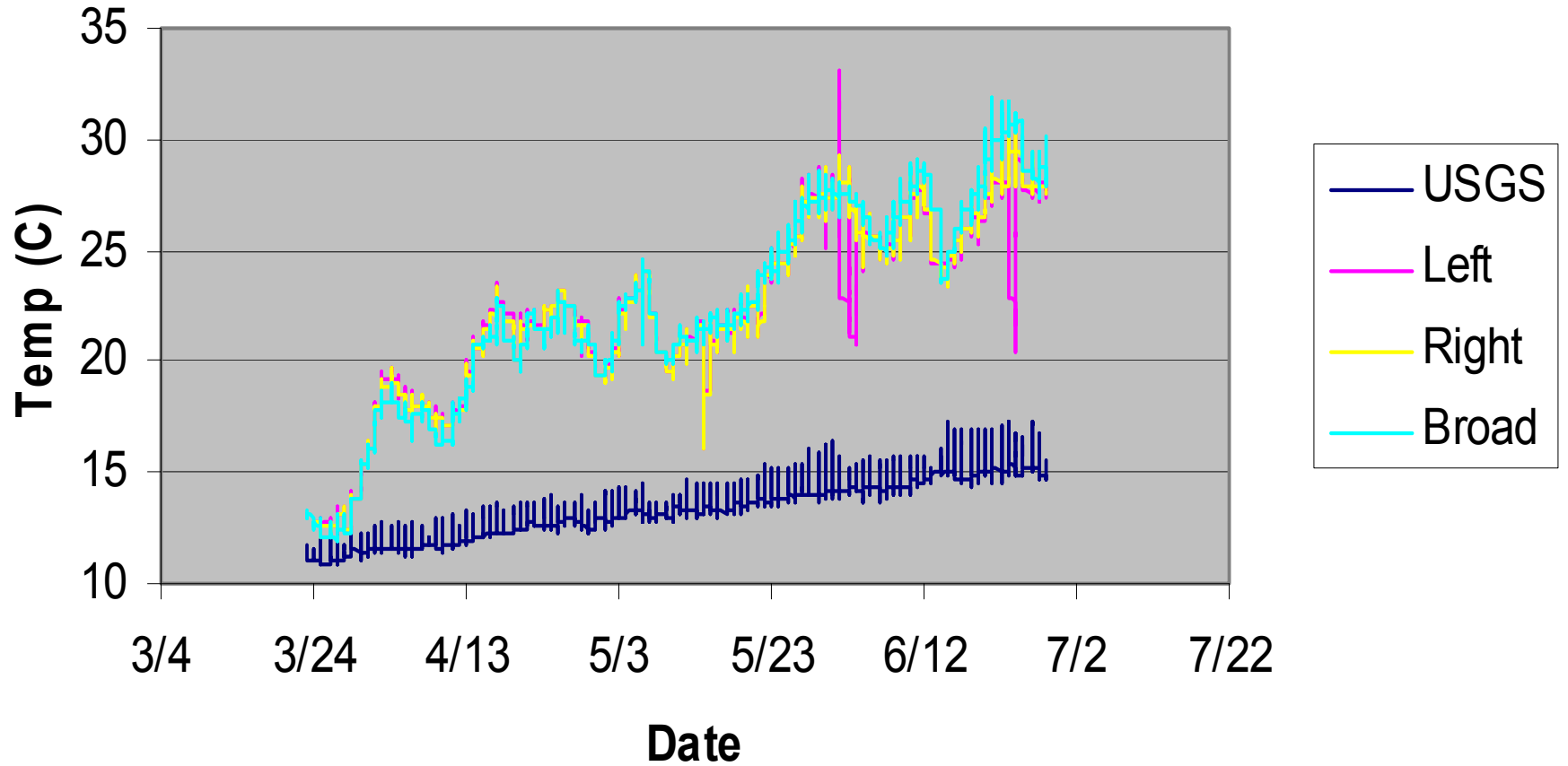
# Congaree at I-77



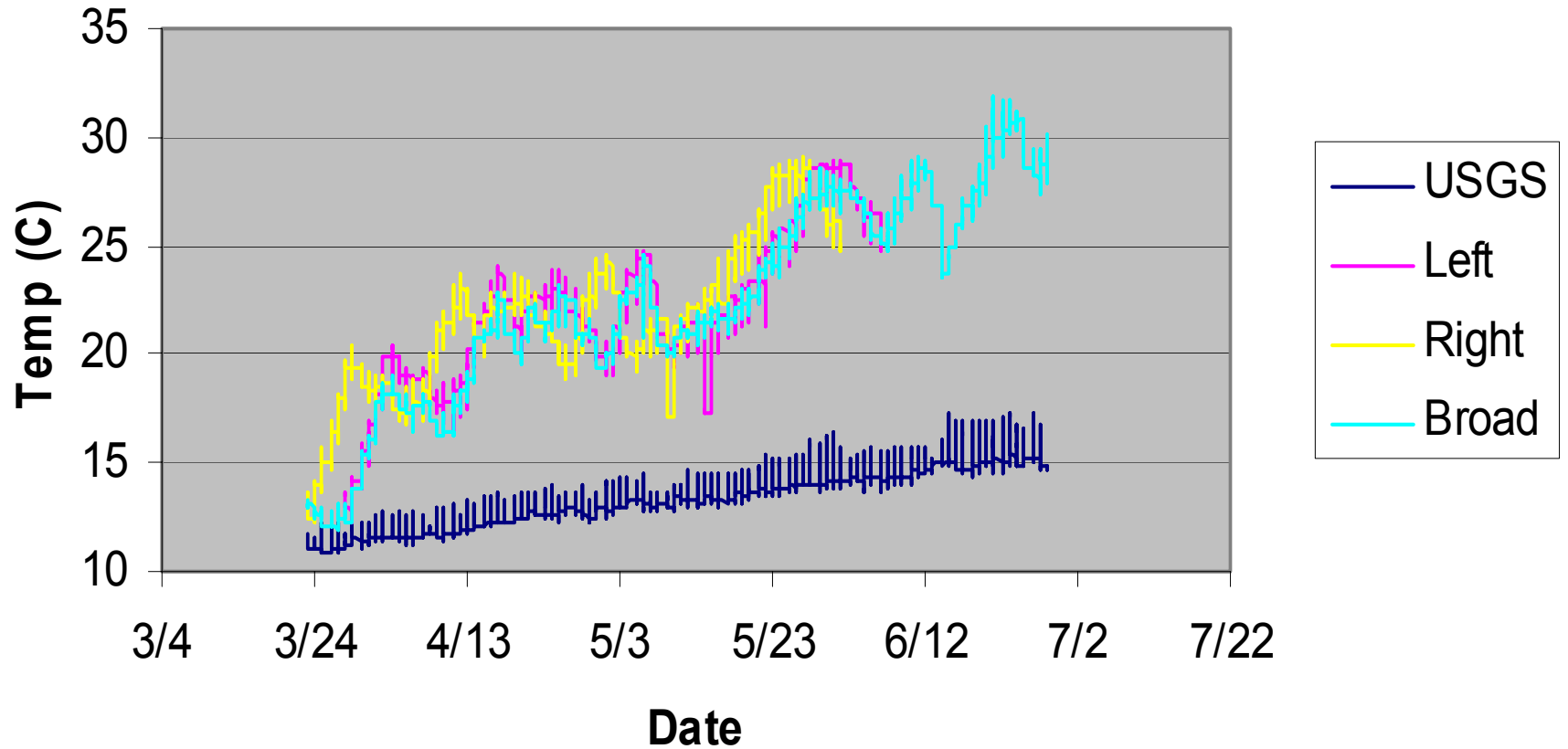
## Between I-77 and CNP



# CNP - Upstream

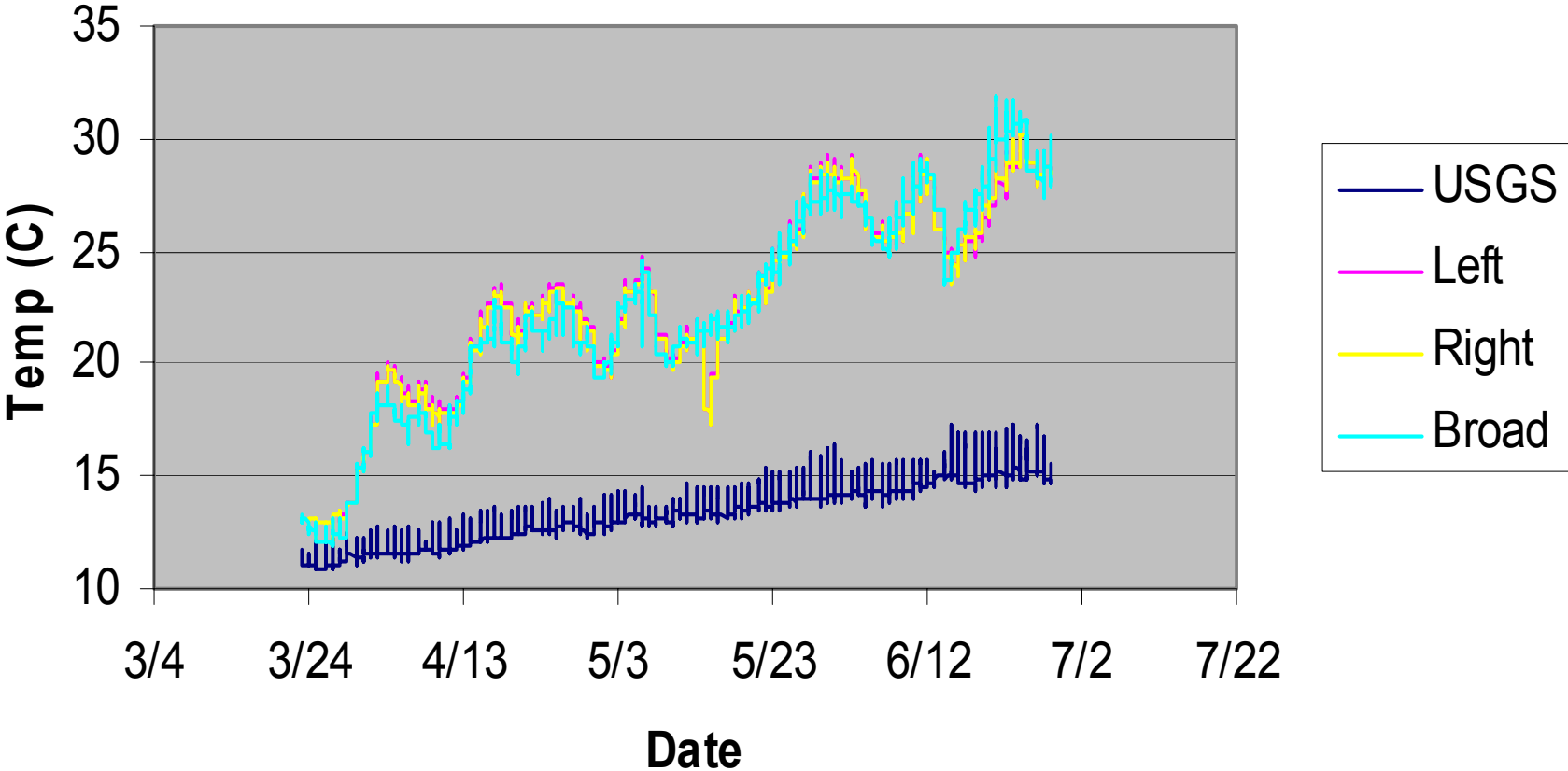


# CNP - Midstream





# CNP - Downstream



# Conclusions

- Congaree and Broad diverge from Saluda in early April
- Cross-sectional temperatures vary below confluence
- To date, data suggests that influence extends at least to I-77 Bridge

# Challenges

- Vandalism / Theft
- Breakoffs (corrosion / snags / high flows)
- Inaccessibility of instruments due to high flows

# Future Needs

- Gather additional data through October 2007
- Evaluate temperature impacts under varying flow conditions (i.e. varying inflows/operations, normal precipitation)
- Appropriate statistical analysis methods
  - missing values
  - How to deal with errors (i.e. due disturbance of probe, etc.)